

15 December 2017



Ms S Johra
Wood End Park Academy
Judge Heath Lane
Hayes
Middlesex
UB3 2PD

Tyrwhitt House, Oaklawn Road,
Leatherhead, Surrey, KT22 0BX

Tel: 01372 587 100
Fax: 01372 587 001
Helpline: 0800 138 1619

Dear Friends at Wood End Park Academy,

contactus@combatstress.org.uk
www.combatstress.org.uk

Thank you for your support of Combat Stress and for raising a fantastic £261.97. We would like to extend our thank onto all pupils and staff for their fundraising efforts. We are honoured to have your support and hope that you had a super time fundraising for Combat Stress.

Thanks to your generosity we are able to provide UK-wide support to veterans from every service and every conflict, on the phone and online, in the community and at our treatment centres.

Demand for our services continues to grow and we have seen a 143% increase in referrals from ten years ago. Each year Combat Stress receives more than 2,000 referrals from former servicemen and women struggling with their mental health. The rate of PTSD among those seeking our support is very high and is the most common mental health issue we treat.

For veteran Darren, who received our support in 2016, his treatment was vital.

"If I hadn't made contact with Combat Stress, I wouldn't be here now. My kids wouldn't have a father. When I was given my diagnosis of PTSD, it was such a relief. I knew there was something wrong with me but I'd never heard of PTSD before. It was so nice to know it wasn't my fault, there was a reason for how I was feeling."

We're on a mission to raise awareness that invisible injuries can be just as hard to cope with as physical ones. So when a veteran, like Darren is having a tough time, we're there to help tackle the past and to help them take on the future.

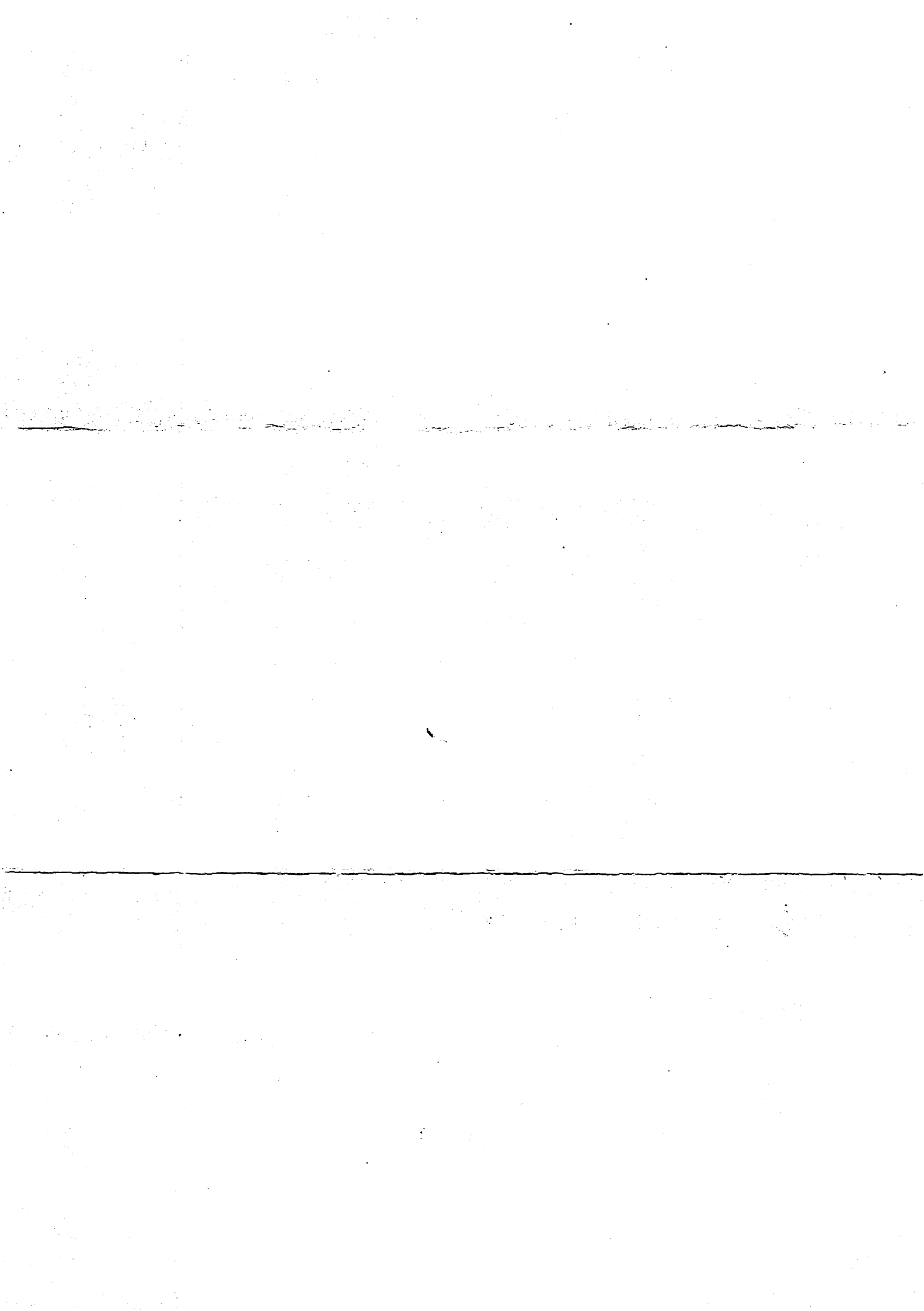
On behalf of everyone at Combat Stress, thank you for making our work possible.

Yours most sincerely,
Robert

Robert Marsh
Director Income Generation
01372 587142
Robert.marsh@combatstress.org.uk

p.s. thank you for this tremendous support which is very much appreciated.





Wood End Park Academy

THANK YOU

You raised

£261.97

for Combat Stress

Your generous donation enables us to continue providing support to veterans from every service and every conflict.

**COMBAT
STRESS**
FOR VETERANS' MENTAL HEALTH